

# Carlson

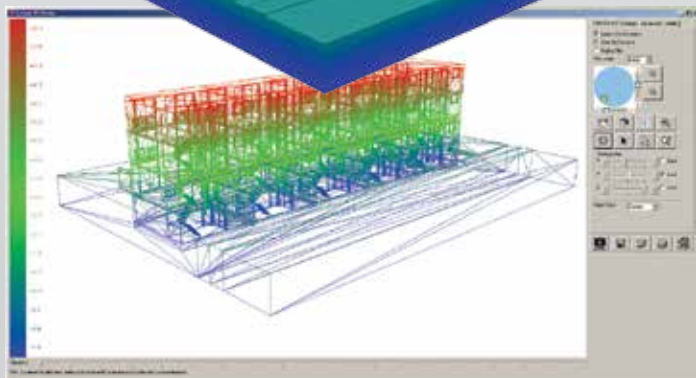
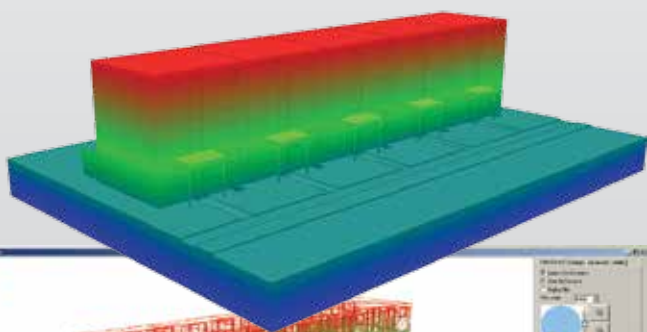
**Create CAD from Non-CAD -  
Bring BIM into CAD and Carlson into BIM**

## Carlson CADnet allows users to:

- Import PDF files
- Convert raster images to vector CAD entities
- Modify raster images using cut, copy, remove speckles, and thicken commands
- Create CAD entities from the raster image using Trace functions and raster snaps
- Create text entities extracted from the raster images
- Digitize from paper plans or on-screen images
- Access a full set of digitizing routines for:
  - Points
  - Polylines
  - Areas
  - Contours
  - Profiles
  - Sections
- End-Areas

## And All New!

- Import BIM using IFC files
- Export Carlson surface to BIM using IFC files



## Find Out More NOW!

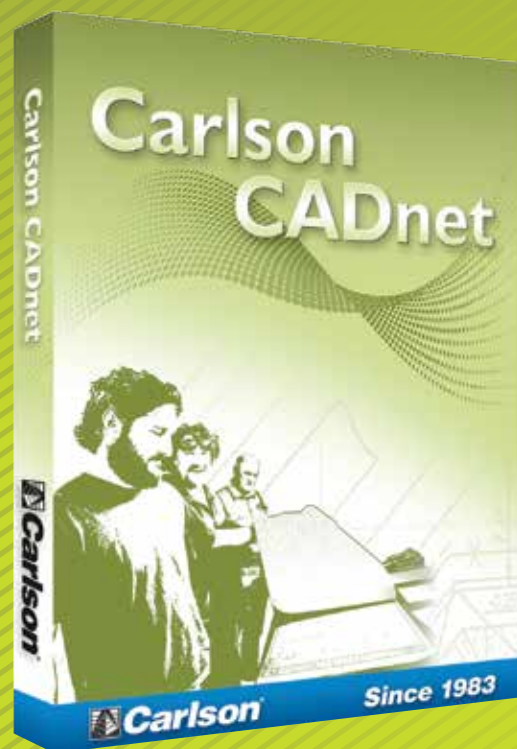
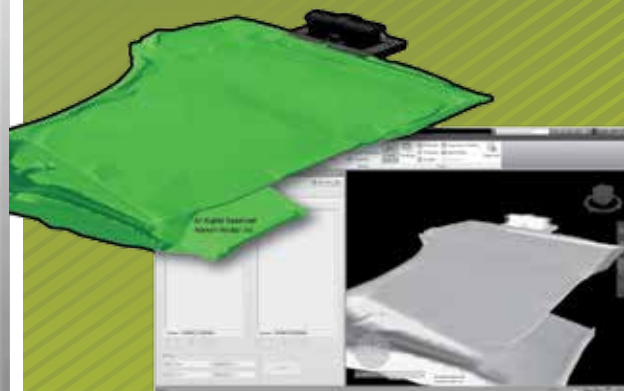
For more info or to locate a dealer near you-

**call - +31 (0) 36 750 1781**

**[www.carlsonsw.com](http://www.carlsonsw.com)**

**[www.carlsonEMEA.com](http://www.carlsonEMEA.com)**

# CADnet



# Carlson

Europe • Middle East • Africa

Markerkant 1338 | 1314 AN Almere | The Netherlands

## Top New Features

### General

Built on AutoCAD® and IntelliCAD®

- Carlson CADnet will run in AutoCAD as well as AutoCAD Map, LandDesktop and Civil3D, and also on IntelliCAD

### Project Setup

- Flexible data storage methods

### Drawing Cleanup

- Fix common drafting errors

### Drafting Enhancements

- Handy tools for working AutoCAD such as Join Nearest, Shrinkwrap Entities, Polyline Utilities, Drawing Inspector, Layer Inspector, and Twist Screen

### Data Compatibility

- Supports industry standard LandXML and scores of specific data conversions

### Points

#### Import/Export

- User-defined import and export of point data along with conversions with specific other formats

#### Draw Points

- Draw points with settings for symbols, layers, and styles

#### Point Groups

- Point group manager to define sets of points by filters

#### Coordinate File History

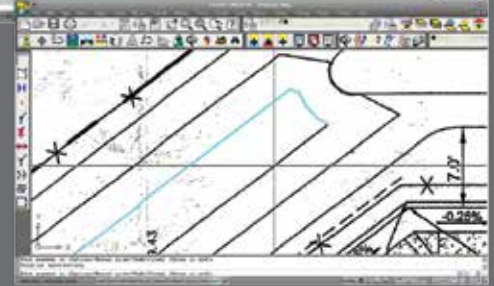
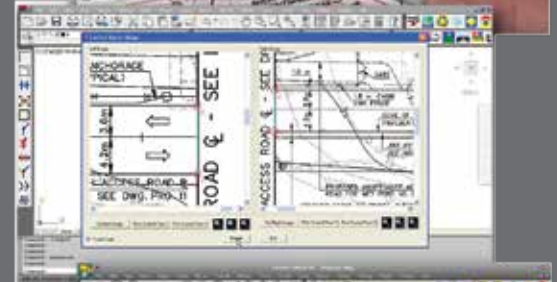
- Tracks all changes to points with report and undo functions

#### Fix Point Label Overlaps

- Finds point label overlaps with rule options to fix automatically

#### Point Tools

- Utilities for modify point ables such as move with leader, twist, and resize



Carlson CADnet is new as a separate module, but it is the product of 10 years of development within Carlson Takeoff, Carlson's versatile site estimating and data prep software.

Carlson CADnet joins with Carlson GeoTech and Carlson Trench to provide customers the flexibility to obtain just the software they need at an affordable price. Pair these three modules with Carlson Construction to form the all new Carlson Takeoff Suite,\* which replaces the non-OEM version of Takeoff.

\* Note: Carlson Takeoff with built-in AutoCAD remains the same.